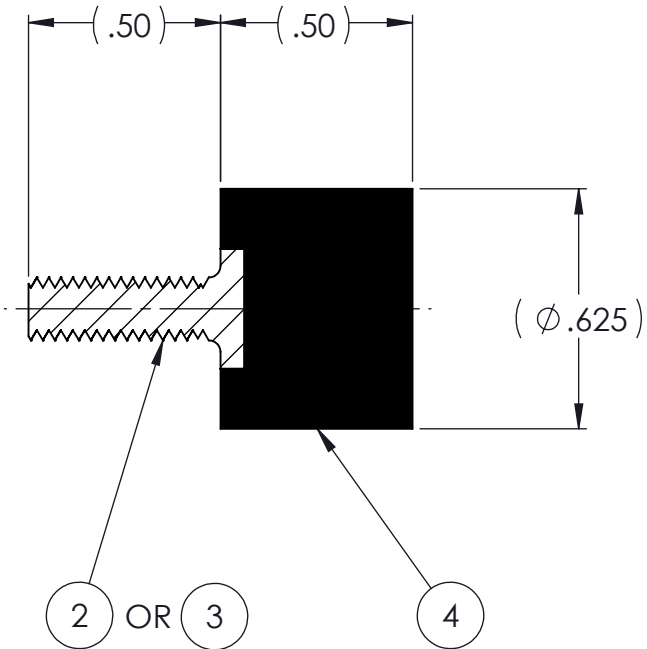
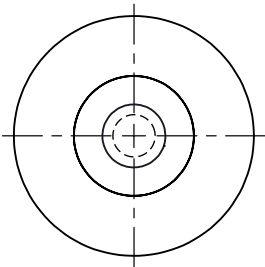
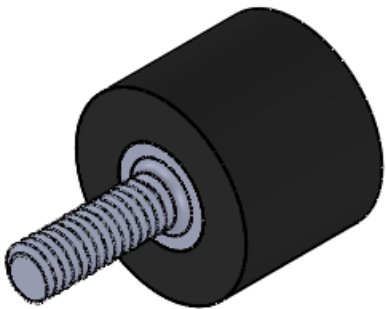



REVISIONS			
REV.	DESCRIPTION	DATE	APPROVED
1	INITIAL RELEASE OF DRAWING	5/28/2014	BS
2	ADD ITEM 3 AND NOTE 3.	8/18/2014	BS



NOTES:

- 1 MATERIAL: ELASTOMER AND DUROMETER OF 40, 50, 60 OR 70 TO BE SPECIFIED.
- 2 ALL DIMENSIONS ARE REFERENCE..
- 3 AVAILABLE WITH THREADS OF 8-32 UNC X 1/2" AND M4 X .7 X 1/2"

PROPRIETARY AND CONFIDENTIAL <small>THE INFORMATION CONTAINED IN THIS DRAWING IS THE SOLE PROPERTY OF KARMAN RUBBER. ANY REPRODUCTION IN PART OR AS A WHOLE WITHOUT THE WRITTEN PERMISSION OF KARMAN RUBBER IS PROHIBITED.</small>	SIGNATURE		DATE	UNLESS OTHERWISE SPECIFIED: DIMENSIONS ARE IN INCHES TOLERANCES: .X = .XX = ± 0.031 .XXX = ANGLES = ±1° INTERPRET GEOMETRIC TOLERANCING PER: ASME Y14.5M-1994
	DRAWN	B. SENEAL	05/28/2014	
	CHECK	S. BROWN	05/28/2014	
	ENGR	B. SENEAL	05/28/2014	
	QA			
	STRESS			
	APPR			

 FOR CONTROLLING NOISE, SHOCK & VIBRATION		SIZE	CAGE CODE
		B	
		DO NOT SCALE DRAWING	

AR	ELASTOMER	K182-3		4
1	MK820-M4	MK820-M4		3
1	MK820	MK820		2
	K182	K182		1
QTY.	DESCRIPTION	PART NUMBER	MATERIAL OR NOTES	ITEM
TITLE: K182 SERIES VIBRO-INSULATOR WWW.KARMAN.COM				
DWG. NO. K182			REV 2	
SCALE: 2:1		WEIGHT: .25 OZ.	SHEET 1 OF 1	